

Sleeping Panda

Counted cross stitch chart



Design size: 200 x 200 stitches

Image credit: Aurora Designs

200 x 200 measures approximately on:

11ct = 46.18cm x 46.18cm

14ct = 36.29cm x 36.29cm

16ct = 31.75cm x 31.75cm

18ct = 28.22cm x 28.22cm

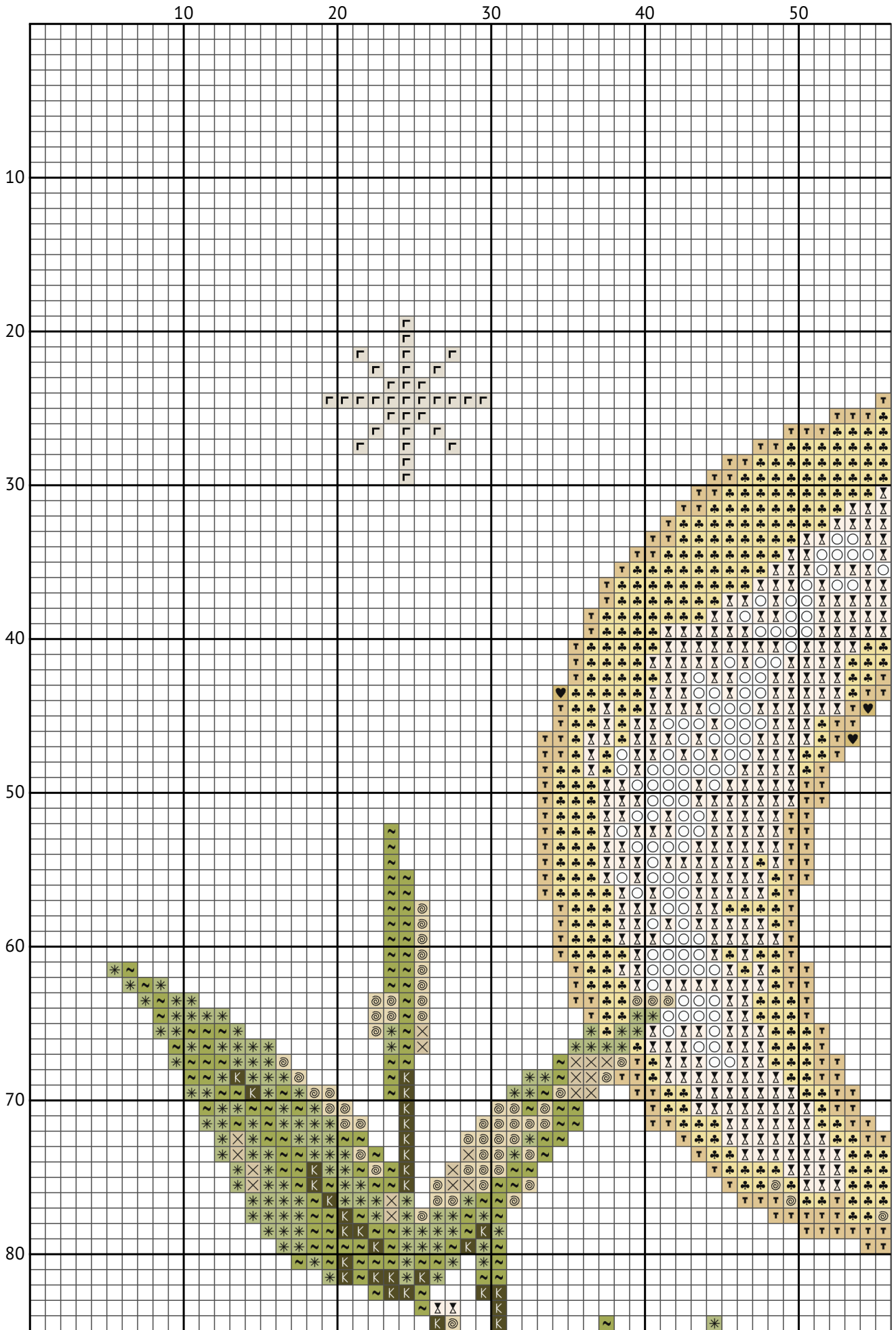
22ct = 23.09cm x 23.09cm

28ct = 18.14cm x 18.14cm

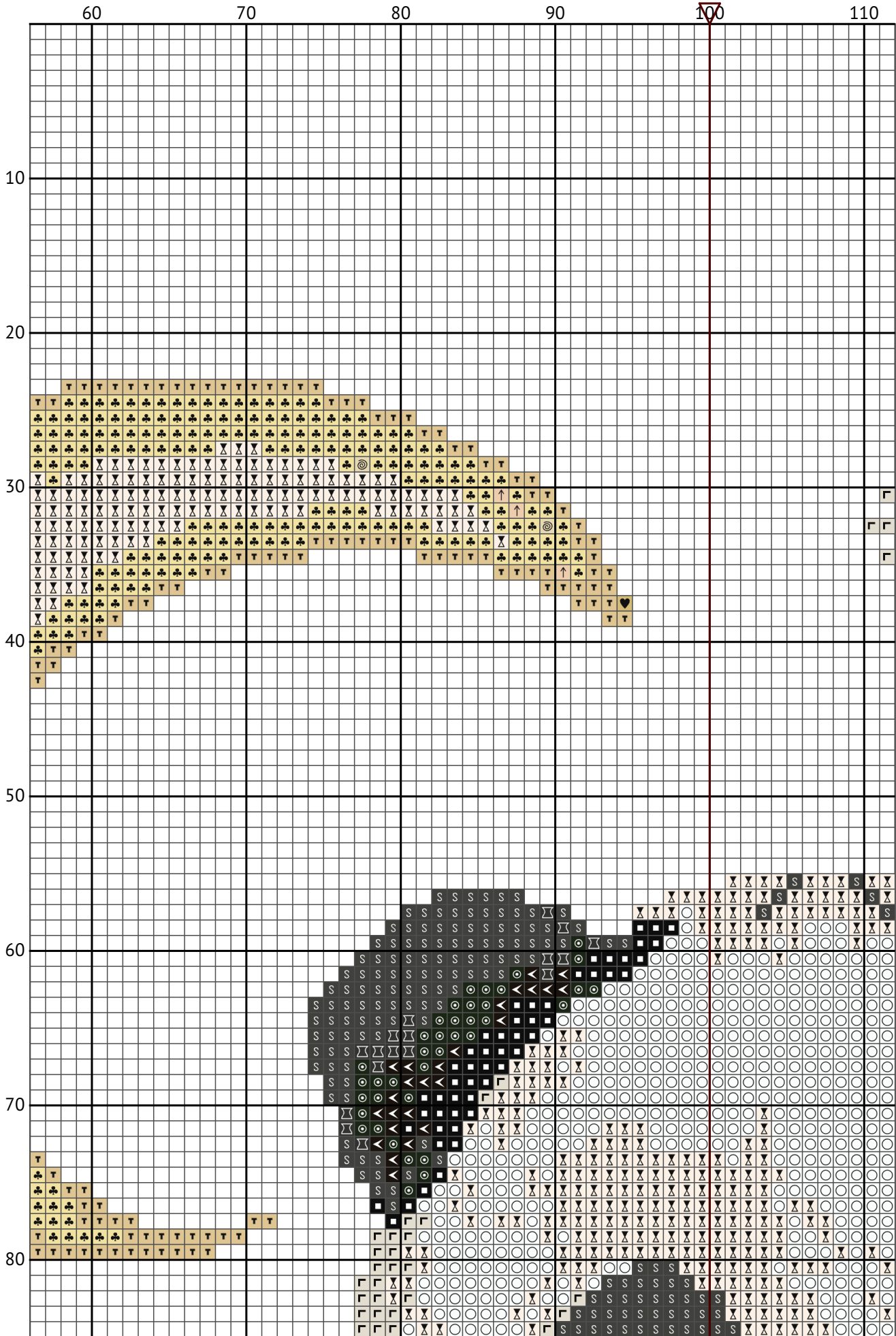
32ct = 15.88cm x 15.88cm

Add an extra 10cm of fabric on each side for framing or finishing.

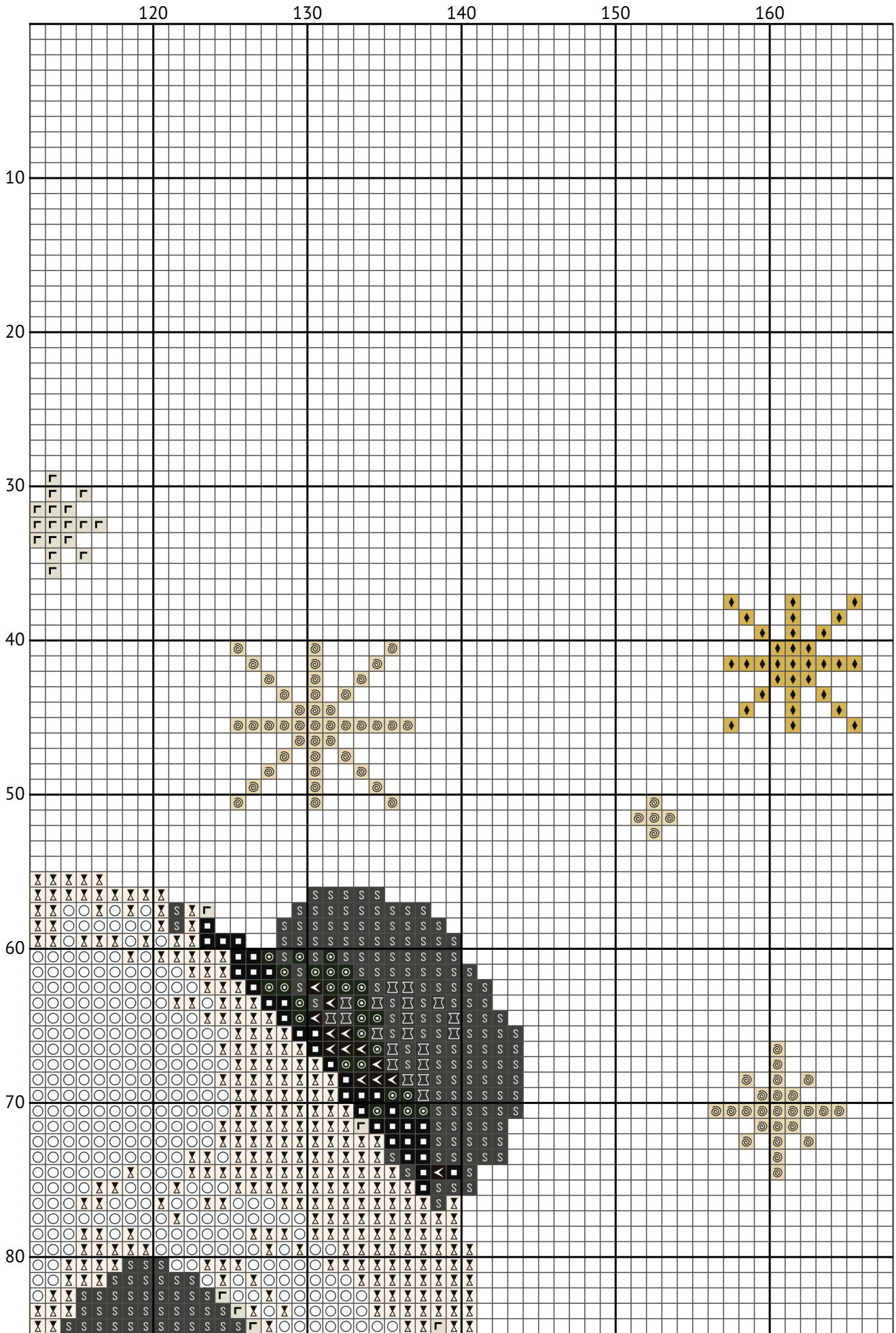
Sleeping Panda



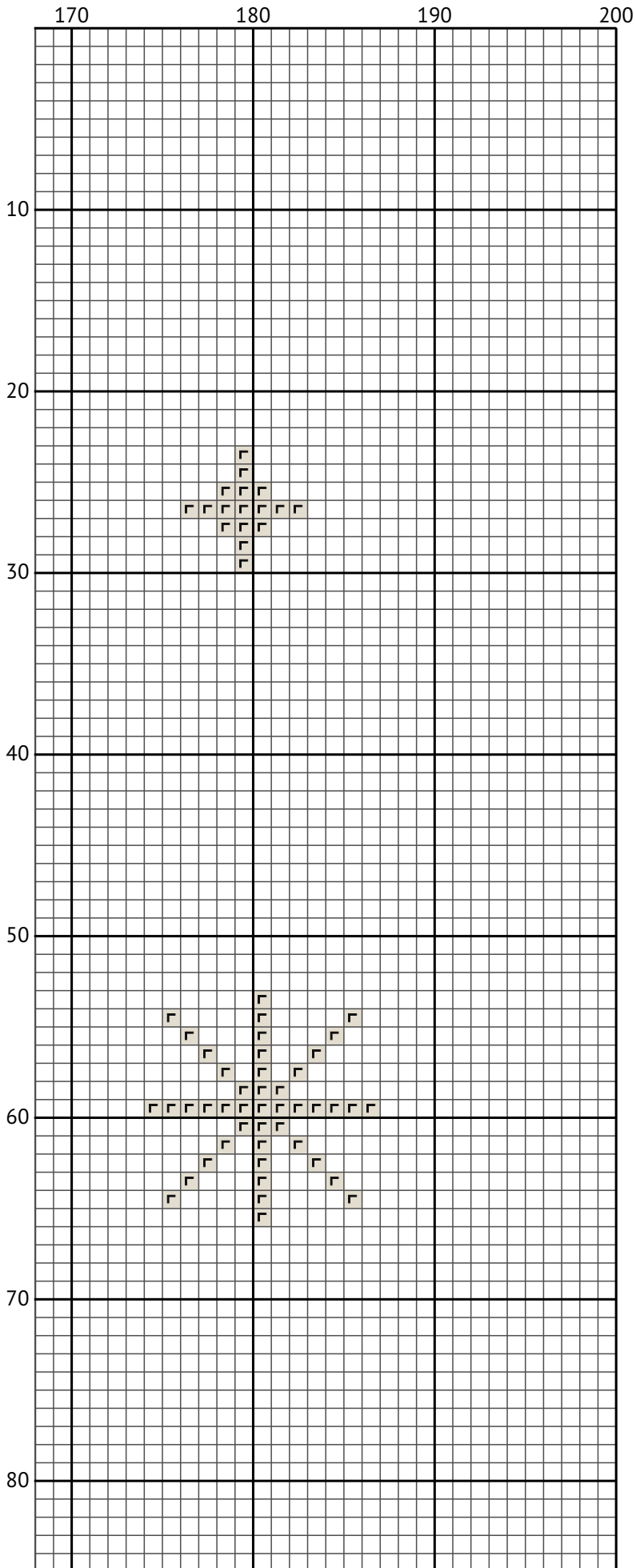
Sleeping Panda



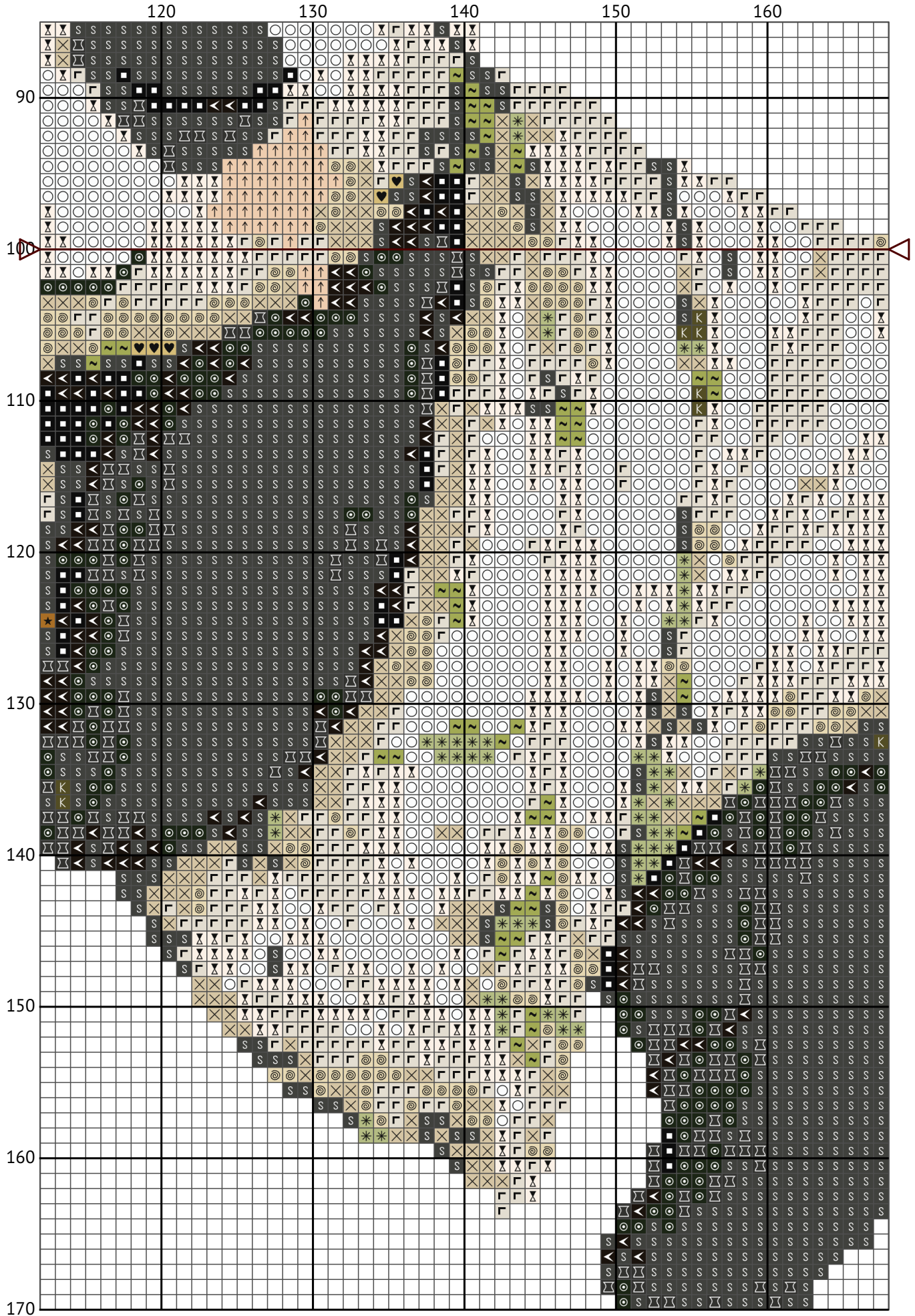
Sleeping Panda



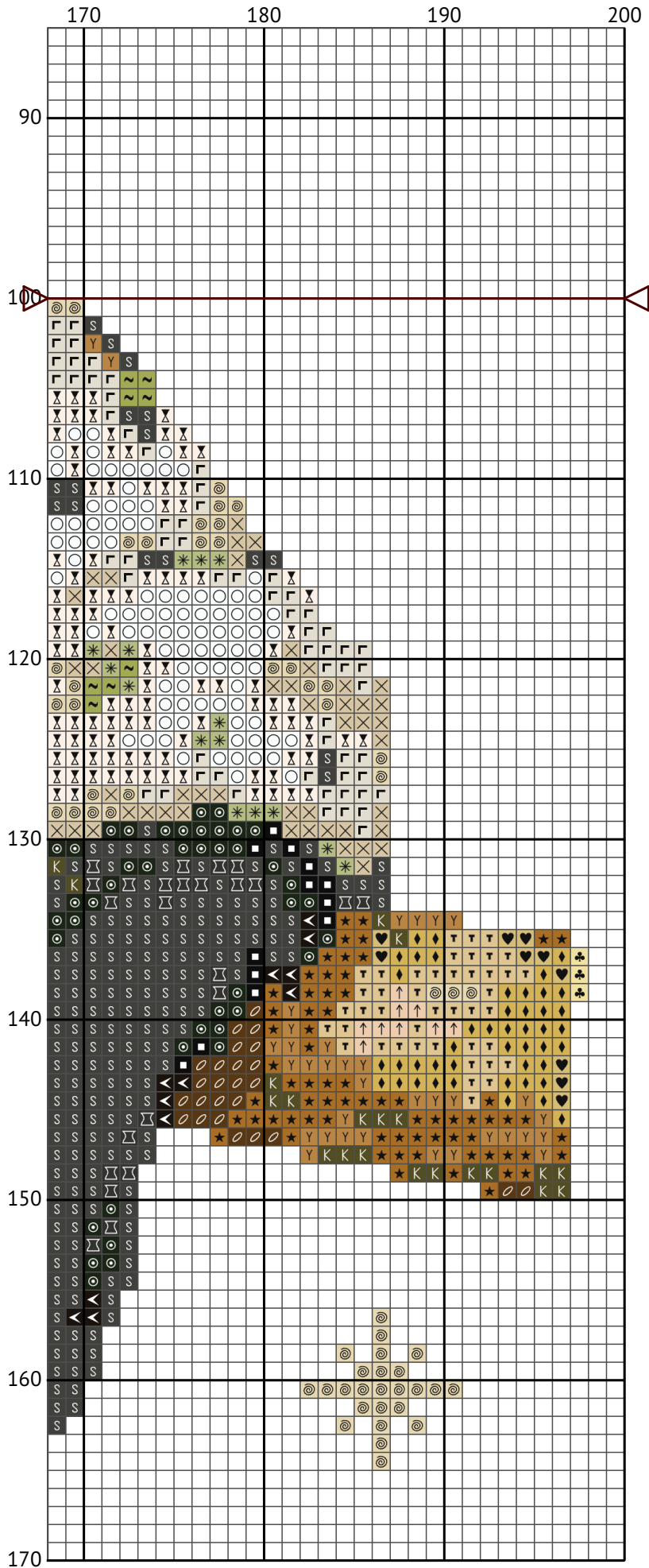
Sleeping Panda



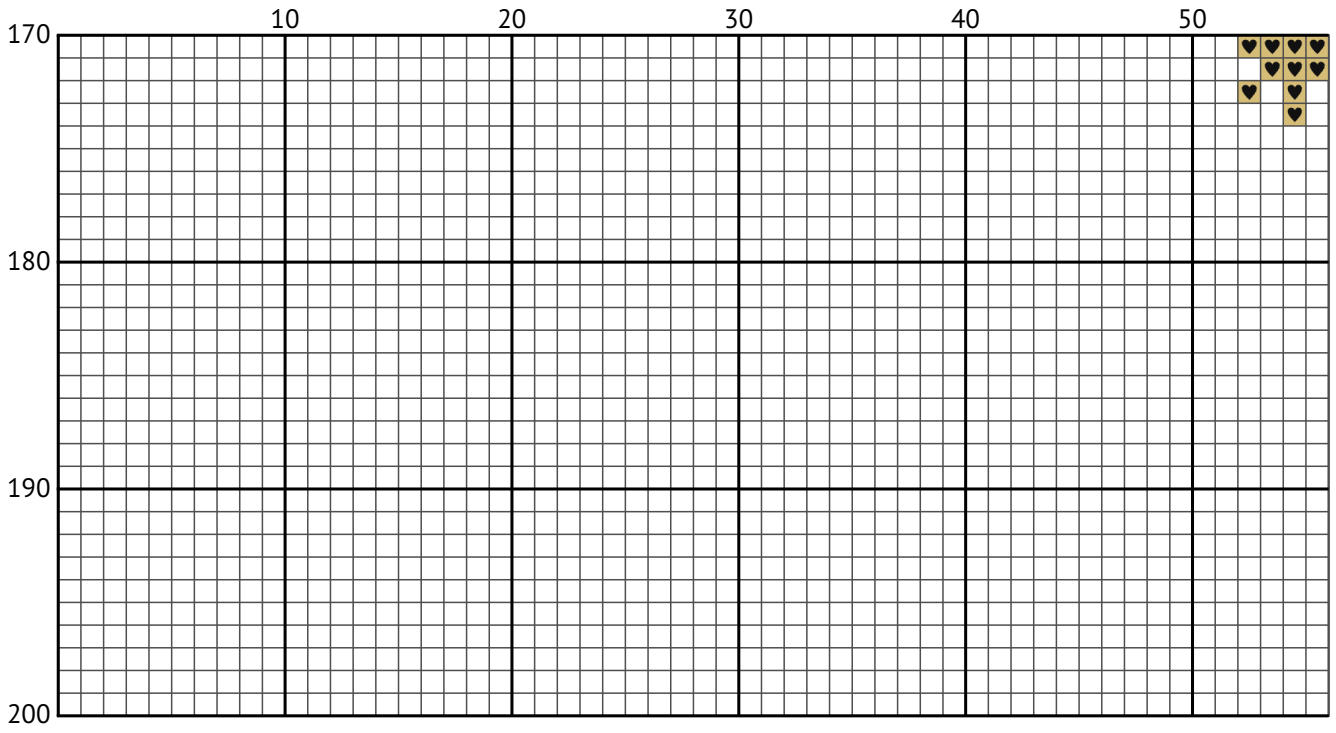
Sleeping Panda



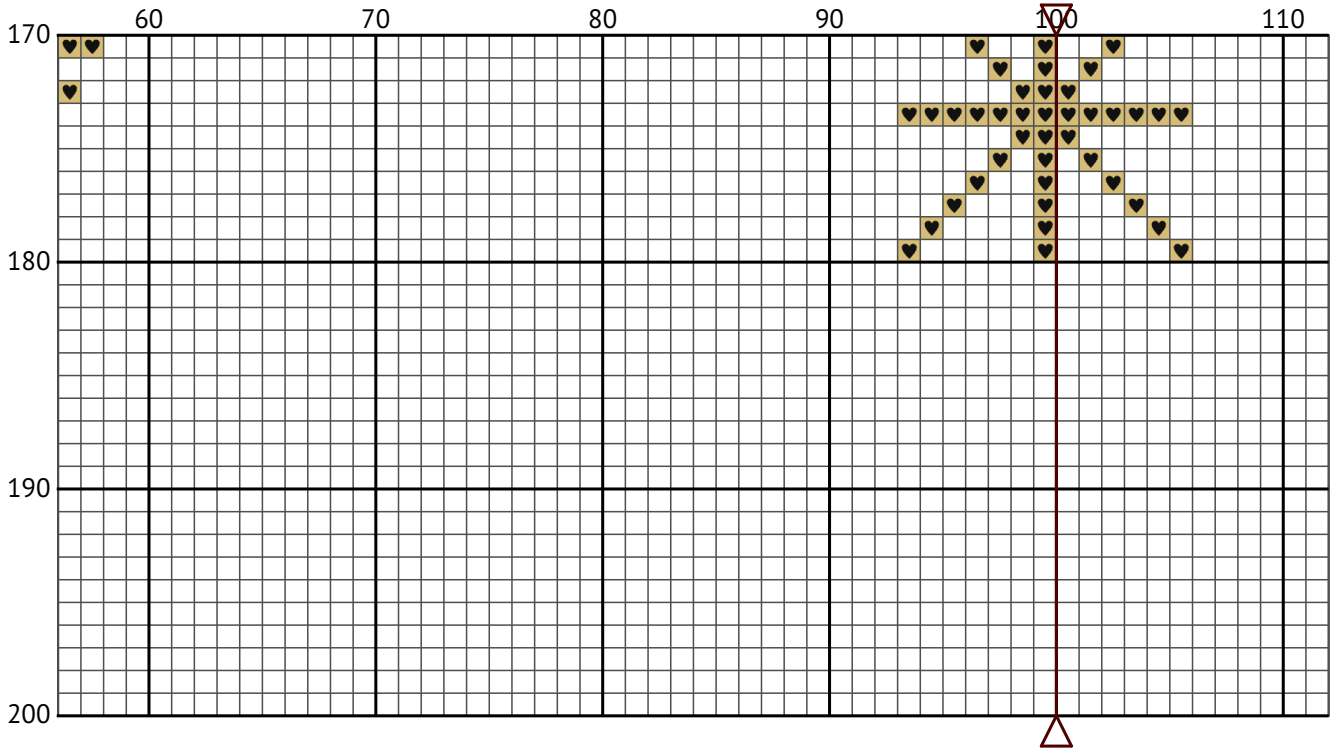
Sleeping Panda



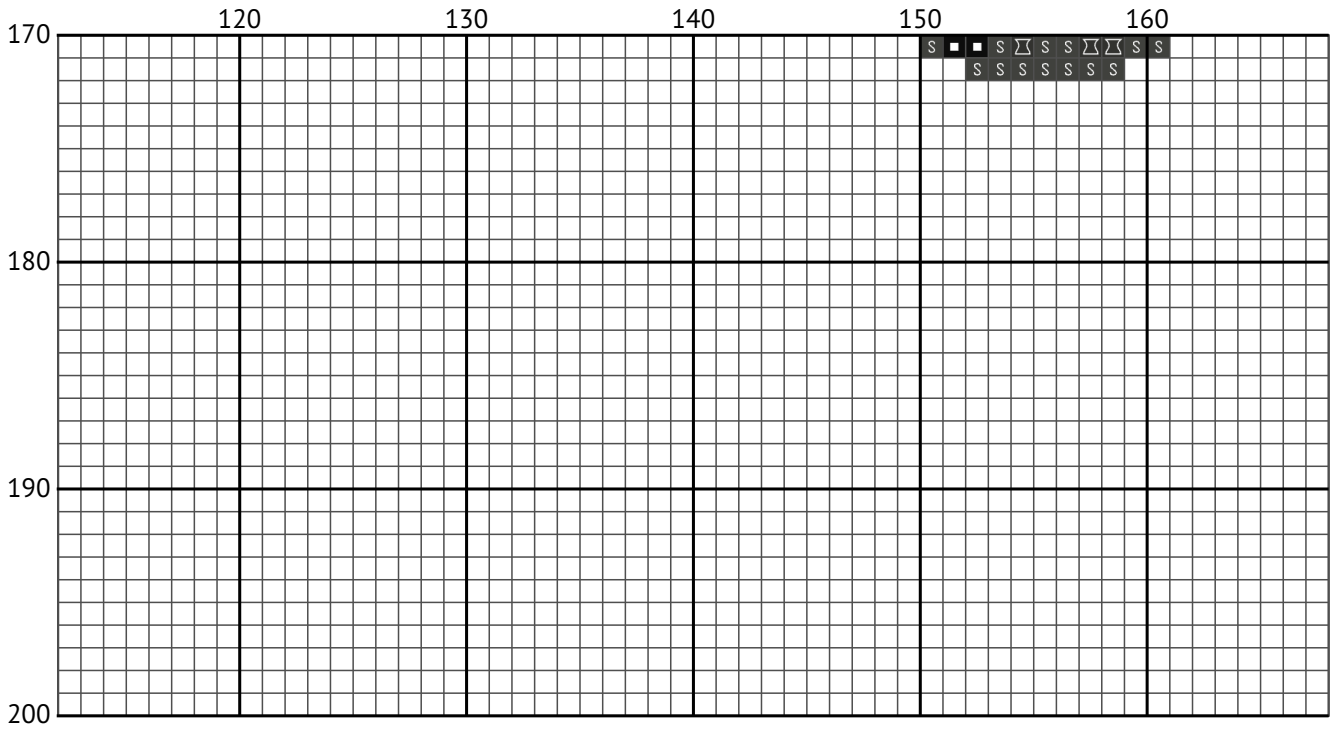
Sleeping Panda



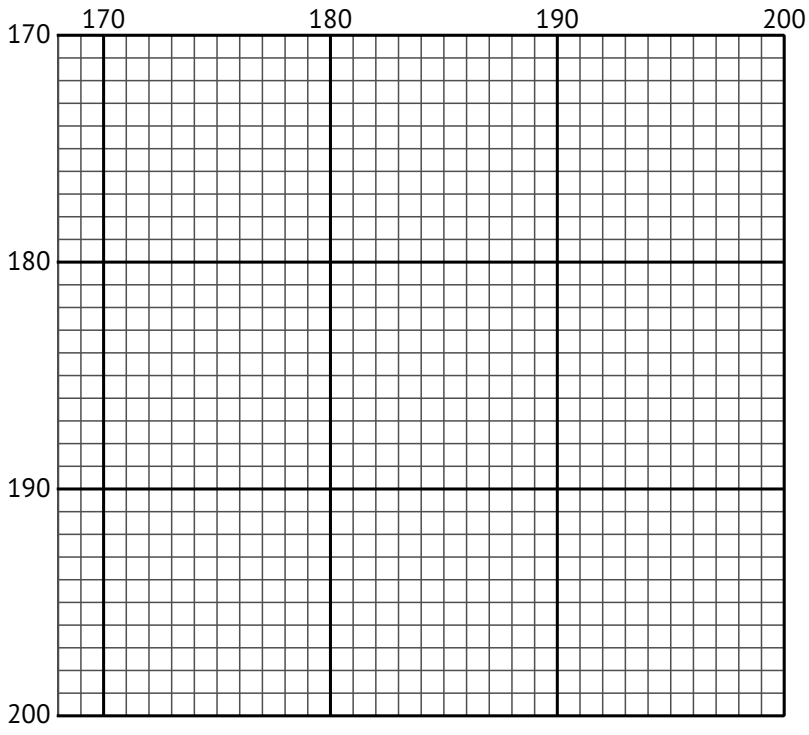
Sleeping Panda



Sleeping Panda



Sleeping Panda



Sleeping Panda
Floss list for crosses

11ct = 4 or 3 strands of cross stitch thread.
 14ct = 2 or 3 strands of cross stitch thread.
 16ct = 2 strands of cross stitch thread.
 18ct = 1 or 2 strands of cross stitch thread.
 22ct = 1 or 2 strands of cross stitch thread.
 28ct = 1 strand (working over 1).
 32ct = 1 strand (working over 1).

N	Symbol	Number	Name	Stitches
1	■	DMC 310	Black	259
2	S	DMC 535	Ash Gray - Very Light	2100
3	★	DMC 680	Old Gold - Dark	241
4	◎	DMC 712	Cream	557
5	T	DMC 739	Tan - Ultra Very Light	419
6	✱	DMC 772	Yellow Green - Very Light	541
7	⌵	DMC 819	Baby Pink - Light	1805
8	✕	DMC 822	Beige Gray - Light	399
9	◆	DMC 834	Golden Olive - Very Light	171
10	◌	DMC 869	Hazelnut Brown - Very Dark	137
11	◎	DMC 934	Avocado Green - Black	414
12	↑	DMC 948	Peach - Very Light	147
13	K	DMC 3011	Khaki Green - Dark	415
14	Y	DMC 3045	Yellow Beige - Dark	271
15	♥	DMC 3047	Yellow Beige - Light	205
16	~	DMC 3348	Yellow Green - Light	659
17	◀	DMC 3371	Black Brown	237
18	⌵	DMC 3799	Pewter Gray - Very Dark	380
19	♣	DMC 3823	Yellow - Ultra Pale	548
20	└	DMC 3866	Mocha - Ultra Very Light	894
21	○	DMC B5200	Snow White	1747